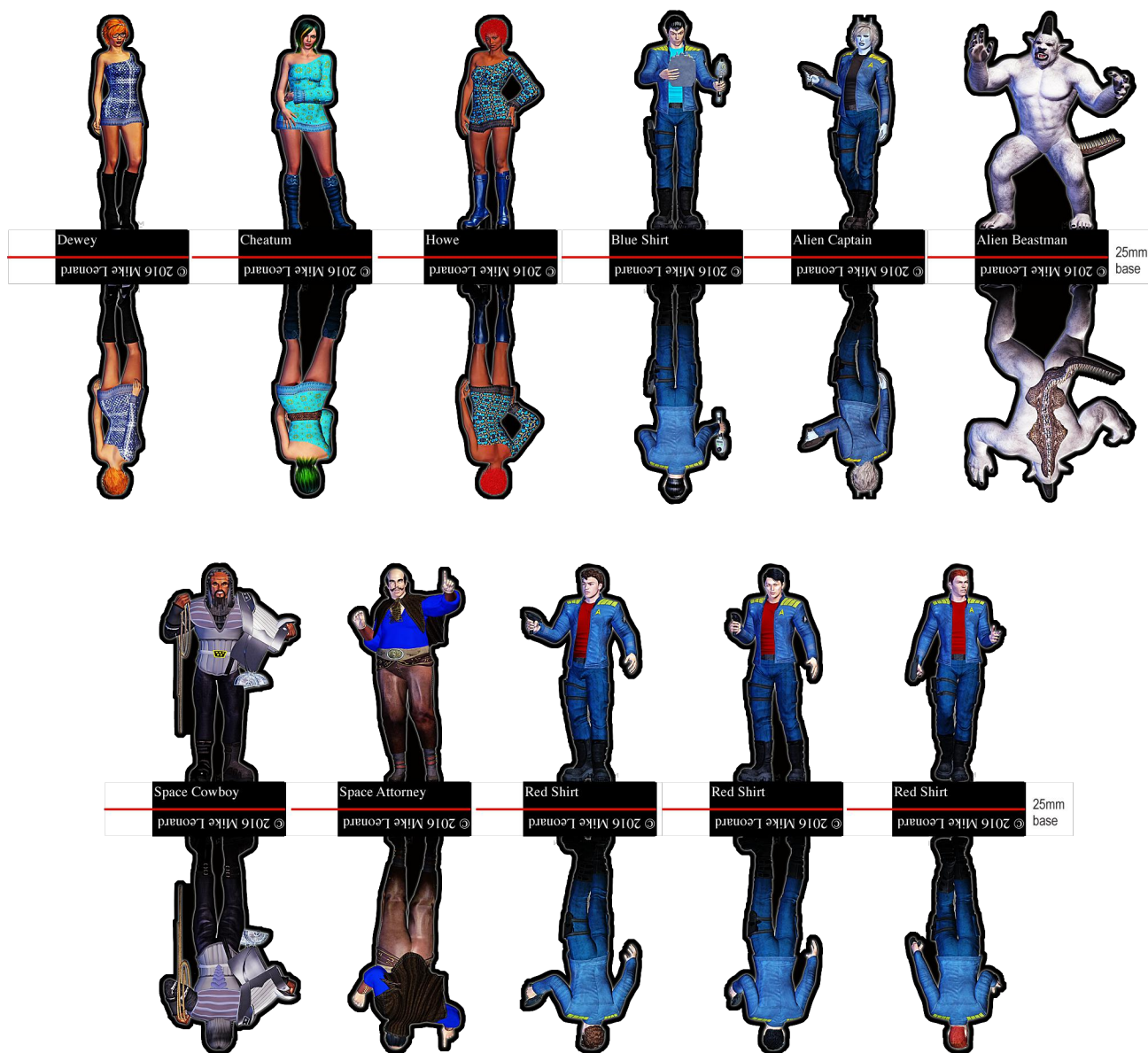


Cardboard Warriors

The paper miniatures wargaming forum

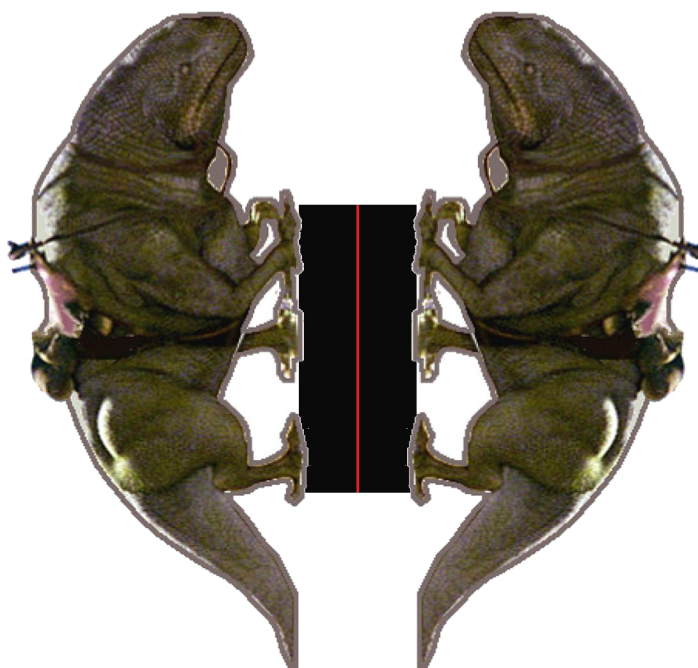
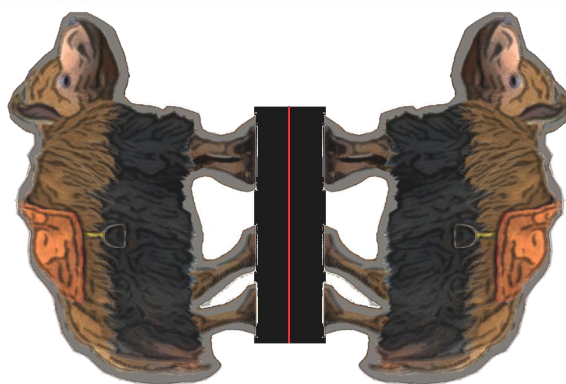
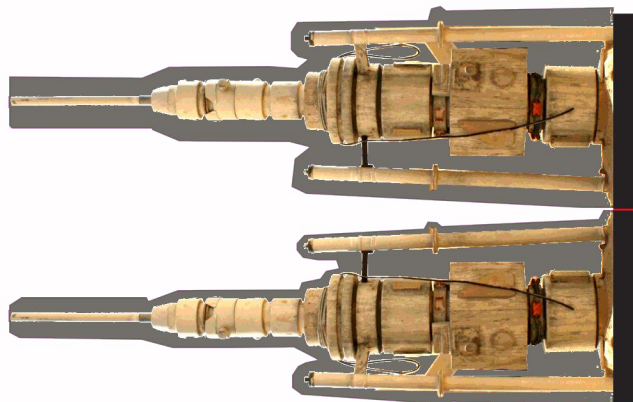


↓ Feed this end into machine cutter ↓

Printing: turn scaling OFF, have centering ON, set to GOOD or BEST setting, Use Matte Photo paper for best results.

Cardboard Warriors

The paper miniatures wargaming forum

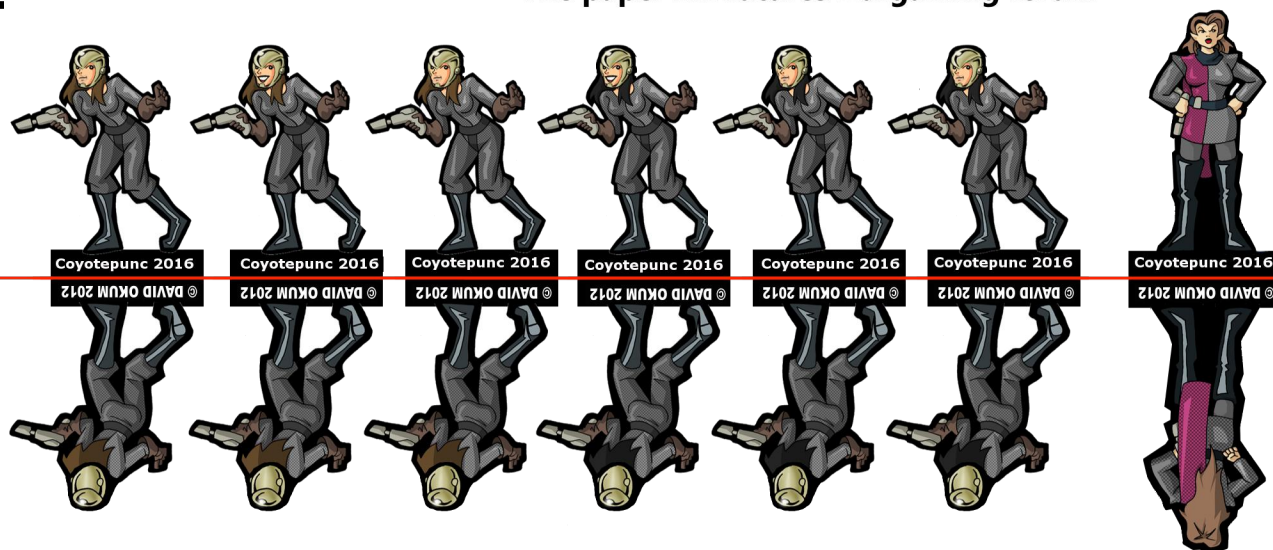


↓ Feed this end into machine cutter ↓

Printing: turn scaling OFF, have centering ON, set to GOOD or BEST setting, Use Matte Photo paper for best results.

Cardboard Warriors

The paper miniatures wargaming forum



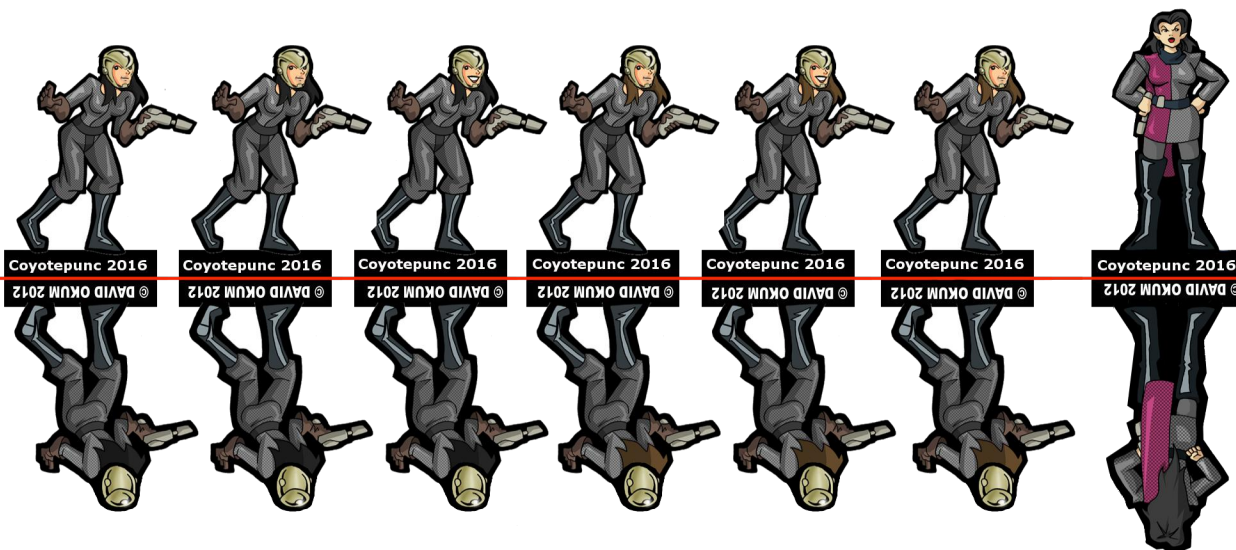
WHERE NO MAN HAS GONE BEFORE ROMULANS



This is a series of paper miniatures supporting the excellent
Microlite 20 supplement Where No Man Has Gone Before by Mike Berkey.

<http://69.51.142.222/trek/>

Artwork ©2010, David Okum



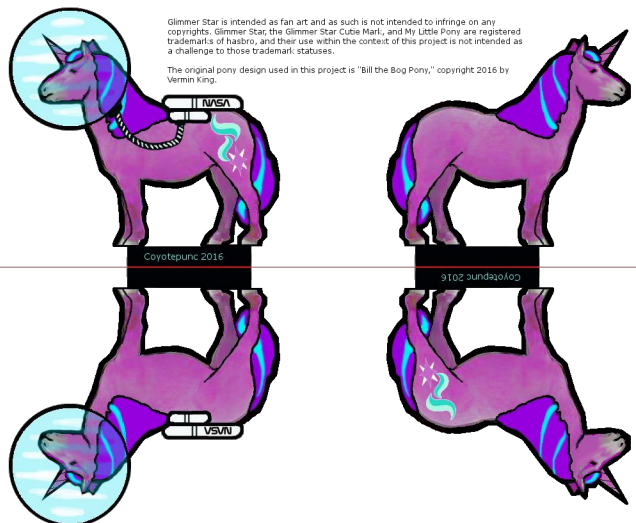
Star Trek and all associated marks and characters are registered trademarks of CBS/Paramount Television. All Rights Reserved. The use of anything related to "Star Trek" is not meant to be an infringement on CBS/Paramount Television property rights to "Star Trek."

↓ Feed this end into machine cutter ↓

Printing: turn scaling OFF, have centering ON, set to GOOD or BEST setting, Use Matte Photo paper for best results.

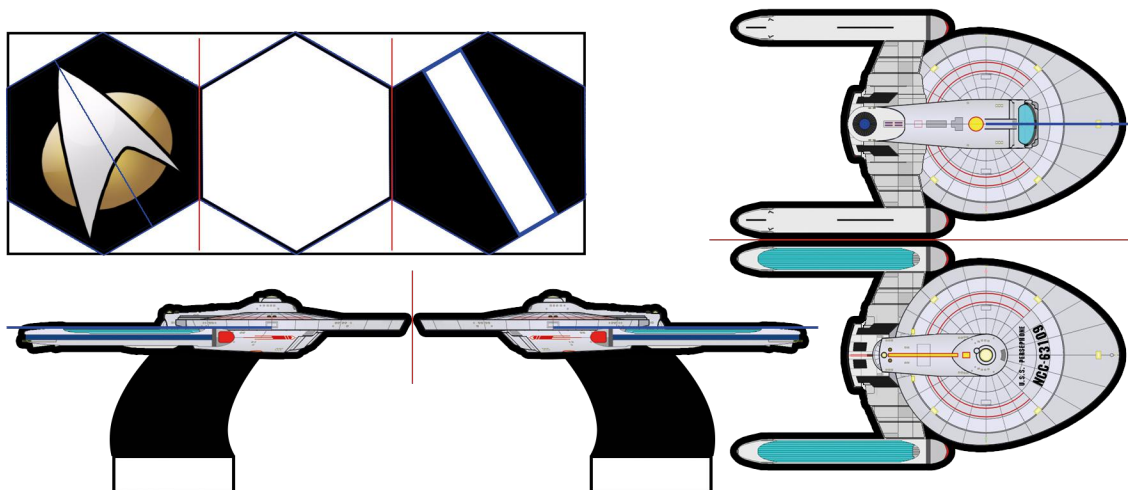
Cardboard Warriors

The paper miniatures wargaming forum



↓ Feed this end into machine cutter ↓

Printing: turn scaling OFF, have centering ON, set to GOOD or BEST setting, Use Matte Photo paper for best results.



THE NEXT GENERATION

U.S.S. PERSEPHONE NCC-63109

PERSEPHONE CLASS EXPLORER/SURVEILLANCE SHIP

HOW TO BUILD THE SHIP

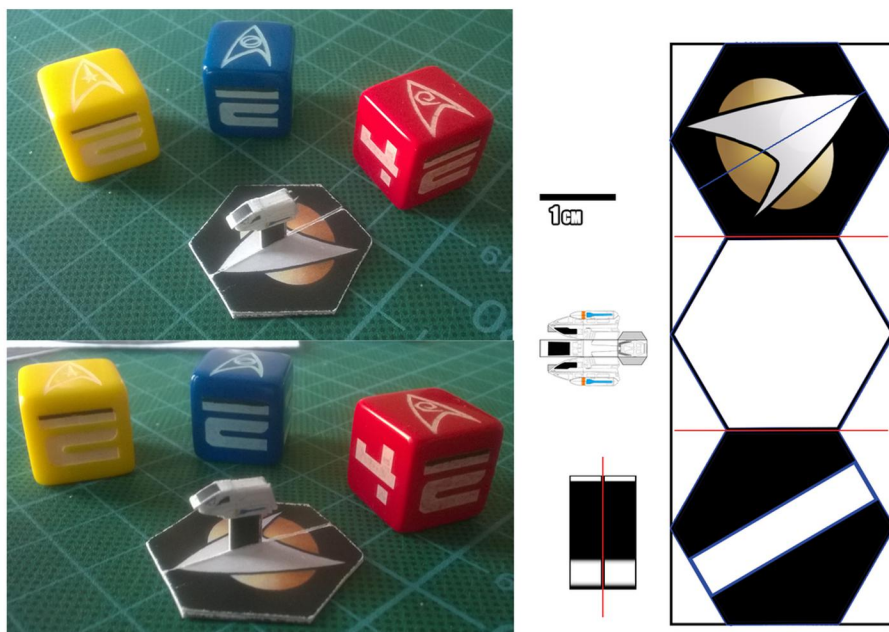
1. CUT OUT ALONG THE OUTLINE AND SCORE ALONG RED LINES.
2. FOLD OVER AND GLUE TOP/BOTTOM AND LEFT/RIGHT TOGETHER. BE CAREFUL TO PUT NO GLUE ONTO THE WHITE FLAP OF THE FLIGHT STAND.
3. CUT ALONG THE BLUE LINES, BUT ONLY AS FAR AS THEY GO.
4. SLIDE THE TOP/BOTTOM PIECE TOP UP INTO THE LEFT/RIGHT PIECE, BUILDING THE 2.5D-MINI THIS WAY.

HOW TO BUILD THE BASE

1. CUT OUT LONG THE OUTER RECTANGLE AND SCORE ALONG THE RED LINES.
2. USE A SHARP KNIFE TO CUT OUT THE INNER RECTANGLE AND ALONG THE BLUE LINE.
3. FOLD OVER THE RIGHT SIDE WITH THE INNER RECTANGLE AND GLUE IT TO THE CENTER PART OF THE BASE. BE CAREFUL TO PUT NO GLUE ON THE AREA OF THE INNER RECTANGLE.
4. FOLD OVER AND GLUE THE TOP PART TO THE REST OF THE BASE.
5. CUT OUT ALONG THE OUTLINE OF THE HEX.
6. TRIM THE WHITE FLAPS OF THE FLIGHT STAND, FOLD THEM OUTWARDS AND SLIDE THE STAND INTO THE BASE.

↓ Feed this end into machine cutter ↓

Printing: turn scaling OFF, have centering ON, set to GOOD or BEST setting, Use Matte Photo paper for best results.



↓ Feed this end into machine cutter ↓

Printing: turn scaling OFF, have centering ON, set to GOOD or BEST setting, Use Matte Photo paper for best results.